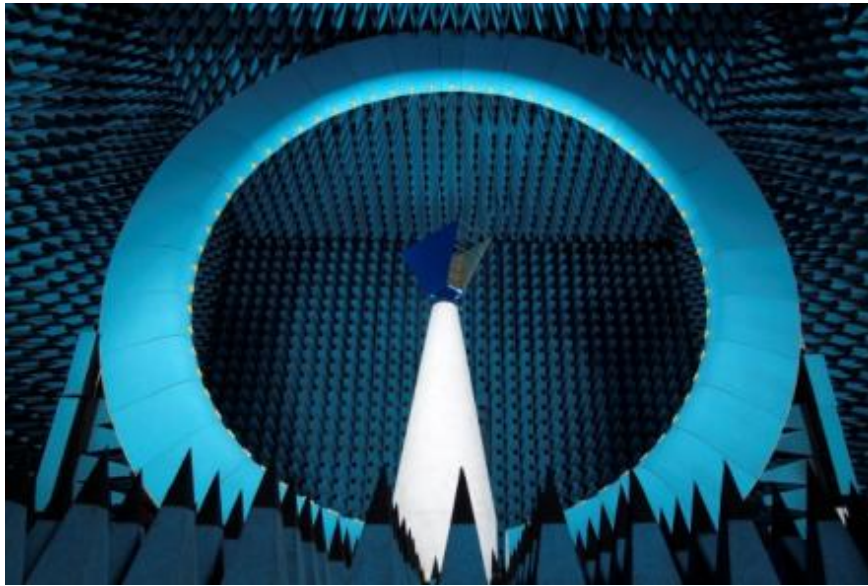


Measurement Services: Facility Description



Test system: SG 64

Location: 2105 Barrett Park Dr., Suite 104, Kennesaw, GA 30144, USA

MEASUREMENT CAPABILITIES

- Antenna**
- Gain, directivity, beamwidth, cross polar discrimination, sidelobe levels, 3D radiation pattern, Radiation pattern in any polarization (linear or circular), antenna efficiency, either in transmit or receive mode.
- OTA**
- Total Radiated Power (TRP), Total Isotropic Sensitivity (TIS), Effective Isotropic Radiated Power (EIRP), Effective Isotropic Sensitivity (EIS), GPS sensitivity (TIS, UHIS, PIGS, ICD)

Model	Frequency Range	Certifications				
		Sprint	CTIA ¹	A2LA/ NIST ²	ISO 17025	ISO 9001
SG 64 standard 6 GHz*	0.4 to 6 GHz	√	√	√	√	√

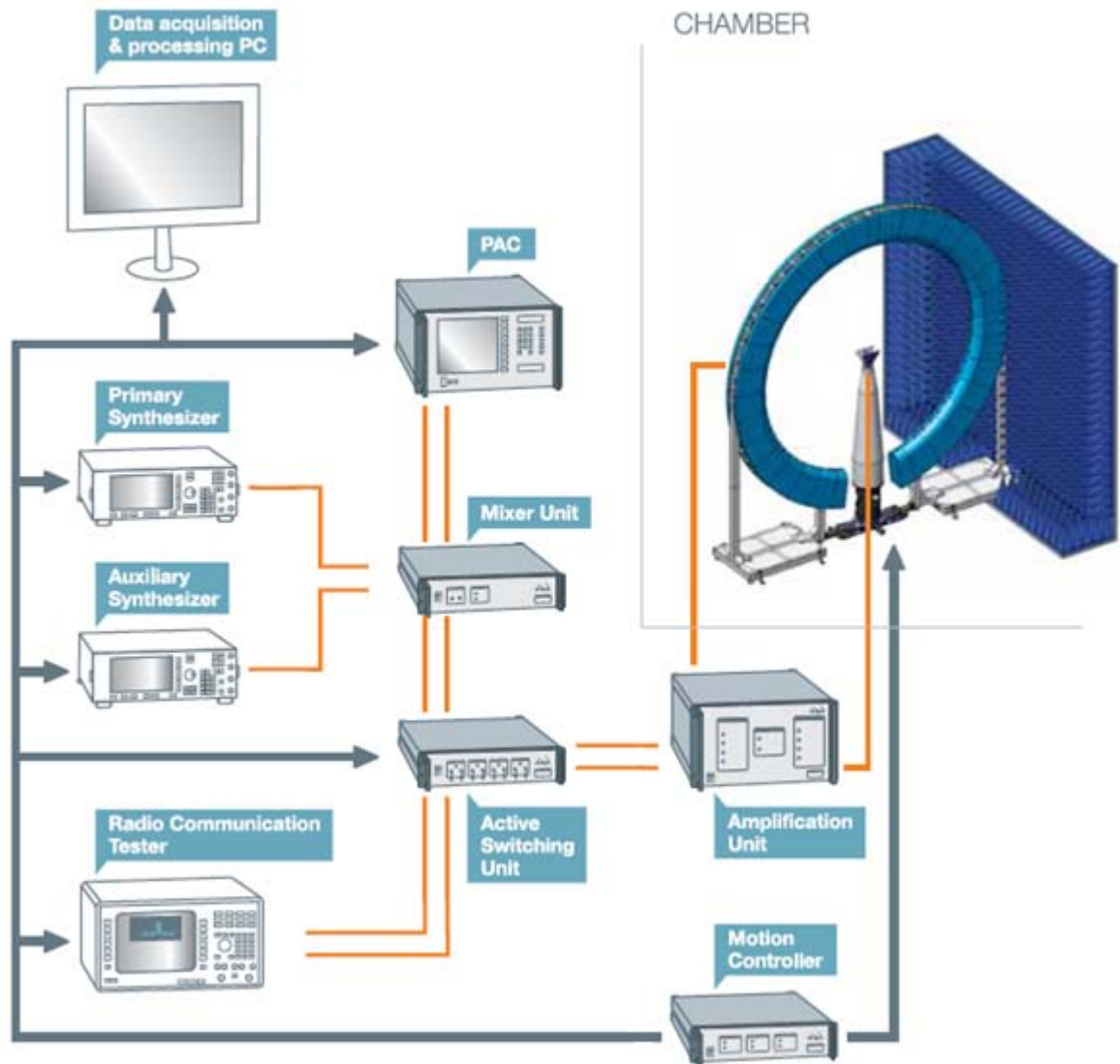
√ Certified

* For further indications on system performances, please consult our Antenna Measurement and Radome Test Systems catalog (multi-probe technology)

¹ CTIA certified measurement for GSM, CDMA and WCDMA Over The Air (OTA) Total Radiated Power (TRP) and Total Isotropic Sensitivity (TIS) measurements.

² A2LA Certification 2246.02 and 2246.01 for calibration and electrical. The scope of accreditation is location-dependent and does not include the entire scope of SATIMO activities. The actual scope of accreditation is available on A2LA's website. NIST traceable gain calibration is available.

SYSTEM OVERVIEW



- Only Azimuth rotation required to perform a full 3D measurement
- Universal masts available for easy mounting
- NIST-calibrated broadband reference antennas
- OTA hardware equipment available (head and hand phantoms, positioner...)

©MICROWAVE VISION 2010



www.satimo.com / www.microwavevision.com / sales@microwavevision.com